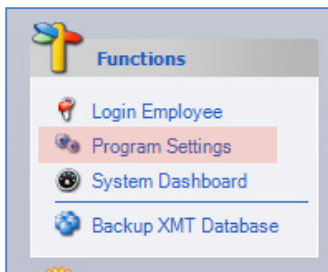


Merchandise Default Store Number

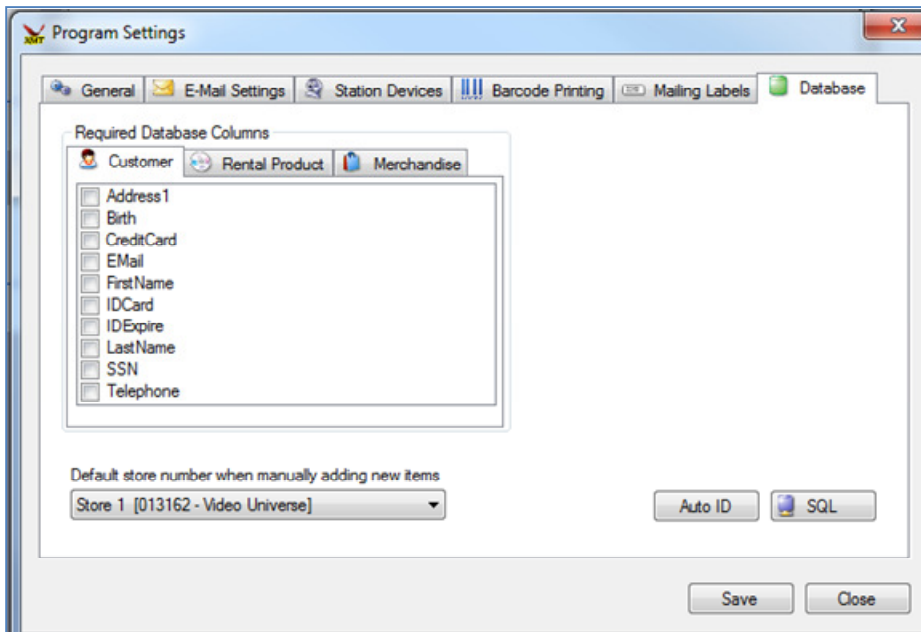
When using Alerion XMT (XMT) in a single location environment, you need to set the default store number when adding merchandise through XMT. Otherwise, any merchandise you add through XMT will be added to store 0 (the warehouse).

To set your default merchandise store number in XMT:

1. Launch Alerion XMT.
2. From the Alerion XMT main menu.
3. Click Program Settings.



4. Click the Database tab across the top.
5. Choose Store 1 in the "Default store number when manually adding new items" drop down box.



6. Click Save.