

Alerion Install Instructions

These instructions will show you how to download and install Alerion Point-of-Sale, Alerion XMT, and SQL Server Express.

Download Software

Launch Chrome, Firefox or Internet Explorer.

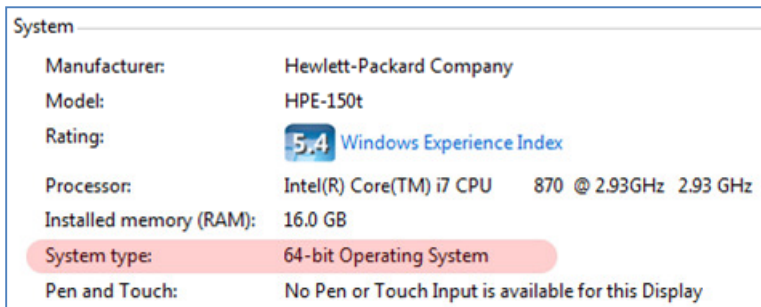
Browse to: **www.alerionpos.com**

Click **Downloads** in the upper right-hand corner of the website.

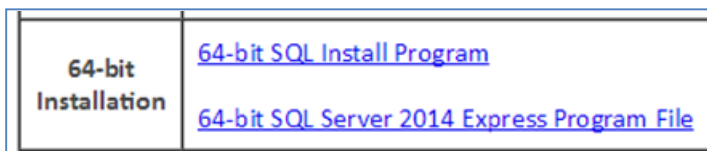
Click **Alerion POS Download**.



When the download is complete, you want to download SQL Server 2014 Express. Find out if you have a 32-bit or 64-bit OS. You can find out by getting into the **Control Panel** and clicking **System**.



Download both the **SQL Install Program** and the **SQL Server 2014 Express Program File** for your operating system (Either 32-bit or 64 bit). Note: You will only download SQL Server for your first computer, the computer that will house the data. Workstations do not need SQL Server.



If you have purchased the Alerion XMT add-on software, download Alerion XMT by clicking **Alerion XMT Download**.



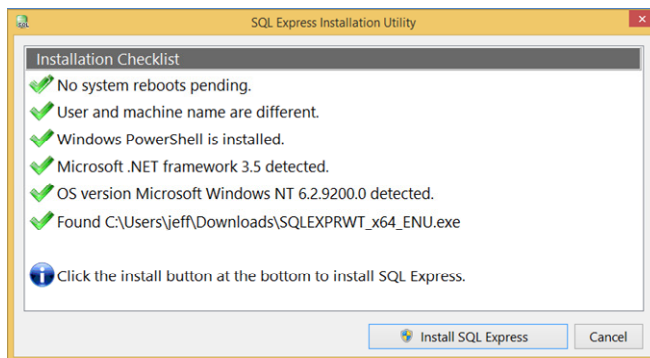
Install The Downloaded Software

Make sure you have all the latest Windows updates and reboot your computer before you begin installing the software.

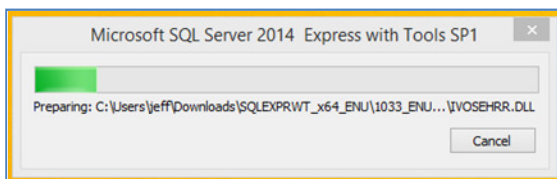
SQL Server 2014 Express

Browse to your downloads folder on your computer. There you will find the four files you just downloaded in the prior instructions.

Install SQL Server 2014 Express. Double-click **SqllInstall.exe**. Note: you will only install SQL Server on your main computer, the workstations do not need SQL Server installed.



The install program will check for most conditions that may stop the SQL Server from installing. If you have all green check marks, click **Install SQL Express**. This will take several minutes. Give it a moment to start the install process. You will see a progress windows.



When the install is complete click **Cancel**.



Alerion Point-of-Sale

Browse to your downloads folder on your computer.

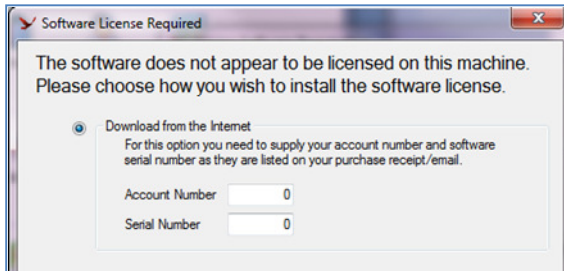
Install Alerion POS. Double-click **AlerionSetup(Web).exe**.

Follow the prompts for the Alerion POS Installation. When the install is finished, click **Finish**.

Launch Alerion POS by double-clicking the icon that was created on your desktop.



Enter your account number and Alerion POS Serial number into the appropriate boxes and click **OK**.



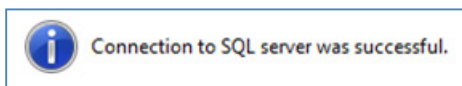
Your account number is: XXXX

Your Alerion POS serial number is: YYYY

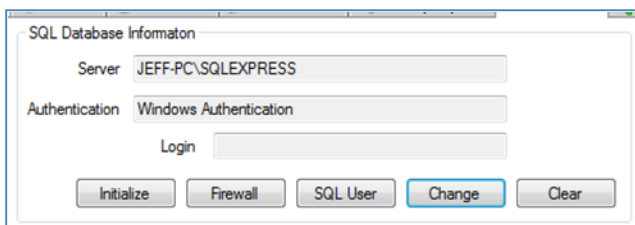
Connect to your Alerion database.

Server or One Computer

If this is your server or if you only have one computer, click **Test**. If the connection was successful you will see a success message. Click **OK** to save the database connection settings.



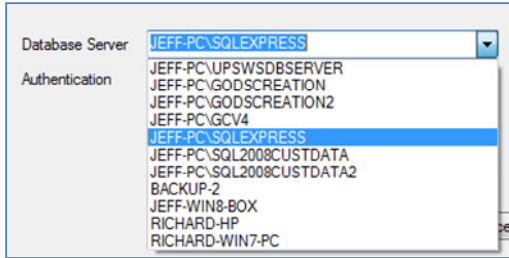
Open the file wall settings by clicking Firewall. Click **Ok** when complete.



Add a SQL User by clicking **SQL User**. Then click **Add User**. Click **Ok** when complete.

Workstations

If this is a workstation, click the Database Server drop down box to show available SQL Servers. Note: this will take a few moments to populate.



You should see your server's computer name a slash then SQLEXPRESS. Choose that from the drop down box and click **Test**. If the connection was successful you will see a success message. Click **OK** to save the database connection settings.

Alerion XMT

Browse to your downloads folder on your computer.

Install Alerion POS. Double-click **AlerionXMTSetup.exe**.

Follow the prompts for the Alerion POS Installation. When the install is finished, click **Finish**.

Launch Alerion XMT by double-clicking the icon that was created on your desktop.



Enter your account number and Alerion XMT Serial number into the appropriate boxes and click **OK**.

Your account number is: XXXX

Your Alerion XMT serial number is: YYYY

You are ready to use your Alerion Suite of products. There is a user's guide inside of Alerion POS. Press [F1] and look for the quick start guide to get on the right path.

You can reach our help line at (800) 922-4556 Opt 2. Monday through Friday 8:00am to 11:30am and 1:00pm to 4:00pm Pacific Time.

Phoenix Information Systems
160 Chemawa Road N
Keizer, OR 97303
(800) 922-4556
www.phx-is.com