

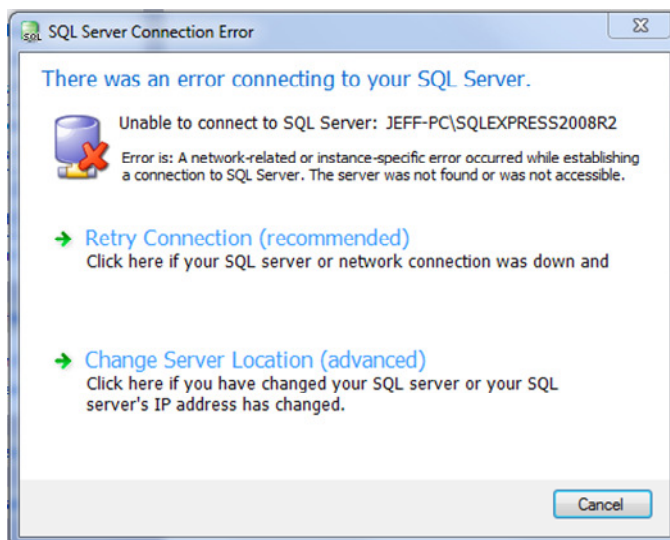
Error Connecting To Your SQL Server

02/04/2016

Overview

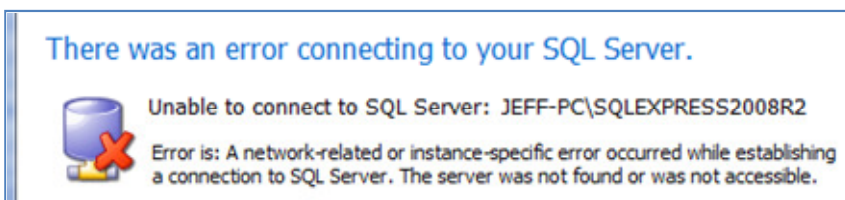
This article will cover restarting your SQL Server when it has not automatically started when you turned on your computer.

Your Alerion software has indicated that there was a SQL Server Connection Error.

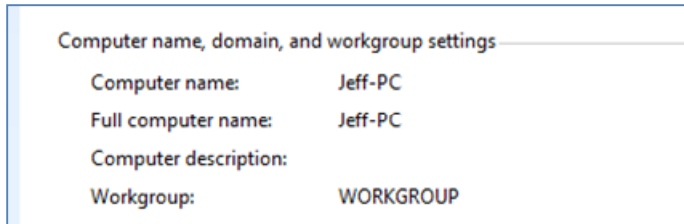


Walk Through

You need to be working on the computer that is housing the data. If you only have one computer running Alerion, it will probably be that one. If you have more than one, find the computer who's name appears in the error message. In the example below, the computer I would look for is **JEFF-PC**

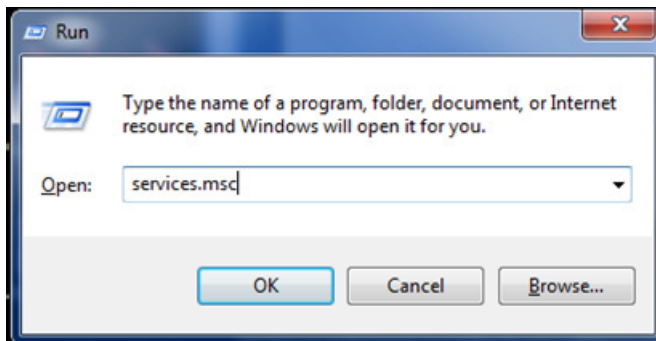


The computer name can be found on the System window in the control panel .

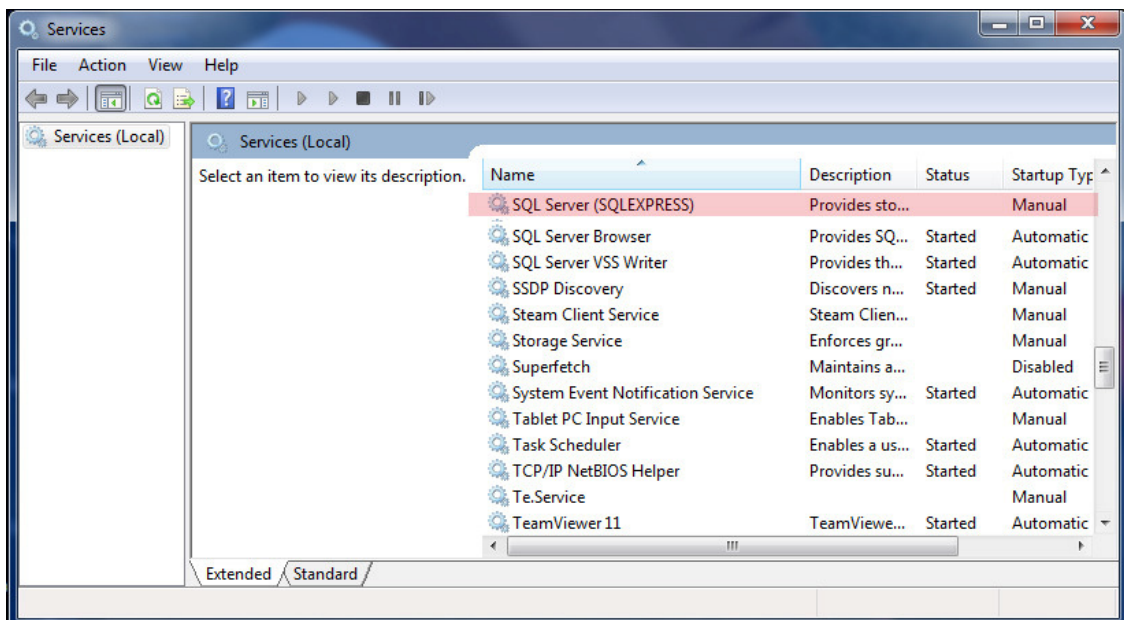


On the computer running SQL Server (Housing your data):

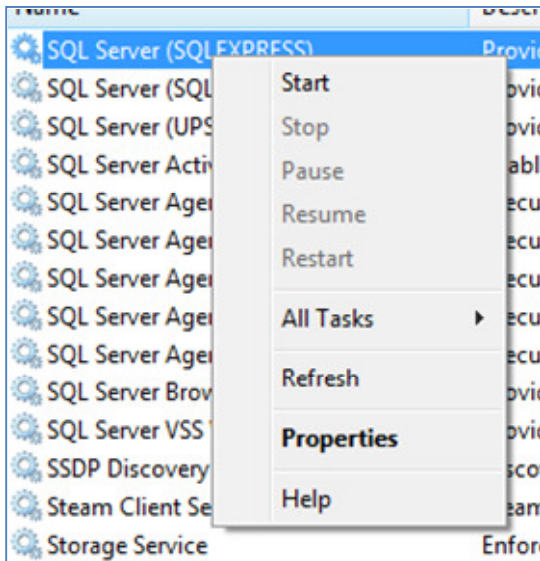
1. Hold down the Windows key and tap the R key. The Run window will appear. In the Open box, type **services.msc** and click ok.



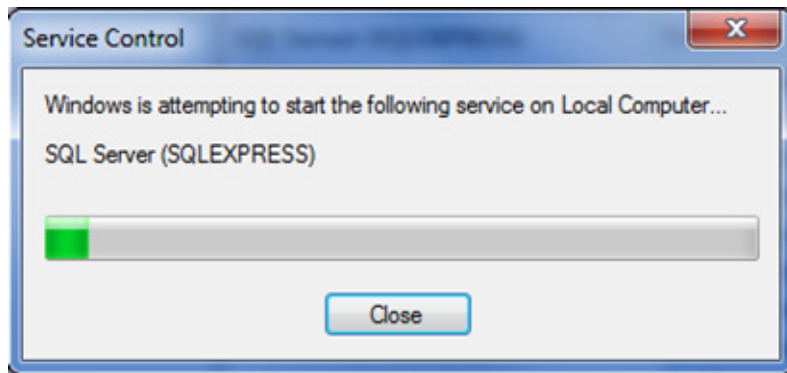
2. Click Yes to allow this program to make changes to your computer.
3. The Services window will appear. You can make the **Name** column bigger by click, hold and dragging the separator bar to the right.



- The **STATUS** column will tell us what condition the SQL Server is in. If it is blank, it is not running. If it says **Started** then SQL is running and you have another issue. We will assume that the status column is blank.
- Right-Click the SQL Server(SQLExpress) line and click **Start**.



- You will see the Service Control Window trying to start SQL Server. Just wait for it to start.



- When it is finished the Service Control window will close and now you should see that SQL Server has started.

Name	Description	Status	Startup T
SQL Server (SQLEXPRESS)	Provides sto...	Started	Manual
SQL Server (SQLEXPRESS7008P2)	Provides sta...		Automati

- Close the Services window by clicking the X in the upper right corner of the Services window.

9. Now you can click Retry Connection or try launching Alerion again.

