

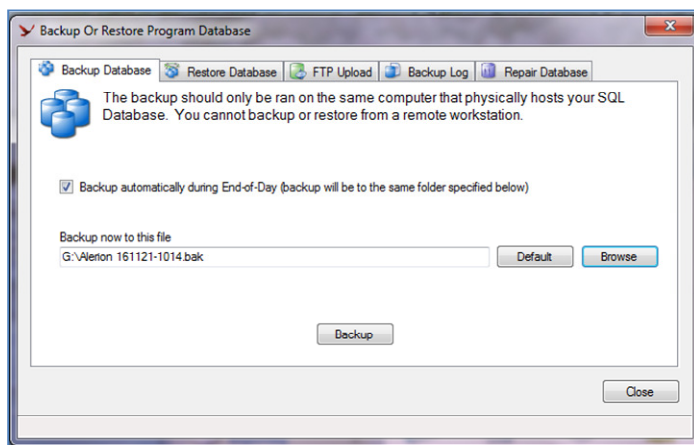
Change Computers Instructions (Single User)

These instructions will show you how to install Alerion and move the Alerion database onto a new computer. These instructions are geared for a single computer system.

Backup The Alerion Point-of-Sale Database

Launch Alerion Point-of-Sale and Login.

Click **Backup Database** on the left side of the screen under the Functions heading.

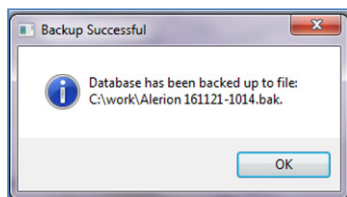


Backup to a USB stick. Insert the USB stick into the computer then click **Browse** on the backup window.

Choose the USB stick drive letter and click **Save**.

Click **Backup**.

When the backup is complete, you will see a window that indicates the backup was successful. Click **Ok**.



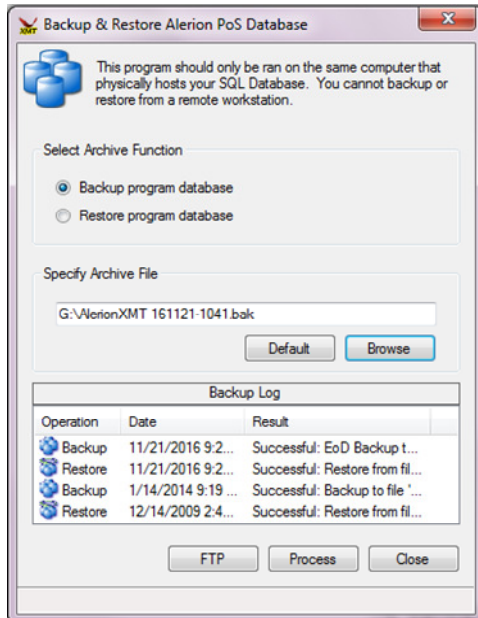
Click **Close**. Exit Alerion Point-of-Sale.

Backup The Alerion XMT Database

If you have not purchased Alerion XMT you can skip this step that shows you how to backup the Alerion XMT database.

Launch Alerion XMT and Login.

Click **Backup XMT Database** on the left side of the screen under the Functions heading.



Backup to a USB stick. Insert the USB stick into the computer then click **Browse** on the backup window.

Choose the USB stick drive letter and click **Save**.

Click **Process**.

When the backup is complete, the backup Log will indicate that the backup was successful. Click **Close**.

Backup Log		
Operation	Date	Result
Backup	11/21/2016 10:...	Successful: Backup to file '...

Download Software

Launch Chrome, Firefox or Internet Explorer.

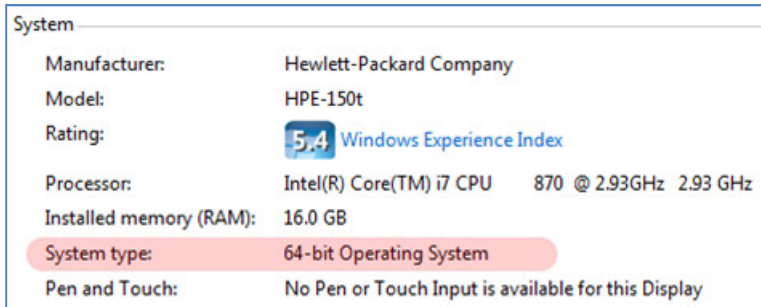
Browse to: **www.alerionpos.com**

Click **Downloads** in the upper right-hand corner of the website.

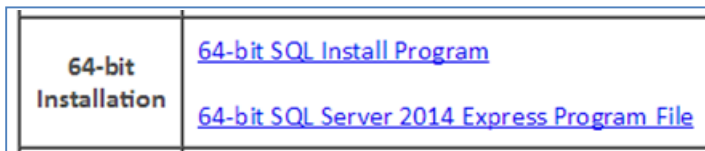
Click **Alerion POS Download**.



When the download is complete, you want to download SQL Server 2014 Express. Find out if you have a 32-bit or 64-bit OS. You can find out by getting into the **Control Panel** and clicking **System**.



Download both the **SQL Install Program** and the **SQL Server 2014 Express Program File** for your operating system (Either 32-bit or 64 bit). Note: You will only download SQL Server for your first computer, the computer that will house the data. Workstations do not need SQL Server.



If you have purchased the Alerion XMT add-on software, download Alerion XMT by clicking **Alerion XMT Download**.



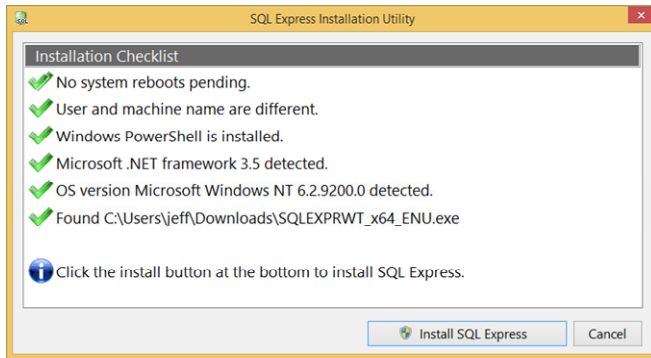
Install The Downloaded Software

Make sure you have all the latest Windows updates and reboot your computer before you begin installing the software.

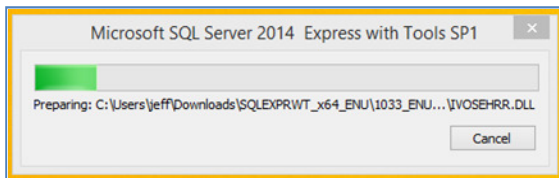
SQL Server 2014 Express

Browse to your downloads folder on your computer. There you will find the four files you just downloaded in the prior instructions.

Install SQL Server 2014 Express. Double-click **SqlInstall.exe**. Note: you will only install SQL Server on your main computer, the workstations do not need SQL Server installed.



The install program will check for most conditions that may stop the SQL Server from installing. If you have all green check marks, click **Install SQL Express**. This will take several minutes. Give it a moment to start the install process. You will see a progress windows.



When the install is complete click **Cancel**.



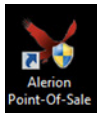
Alerion Point-of-Sale

Browse to your downloads folder on your computer.

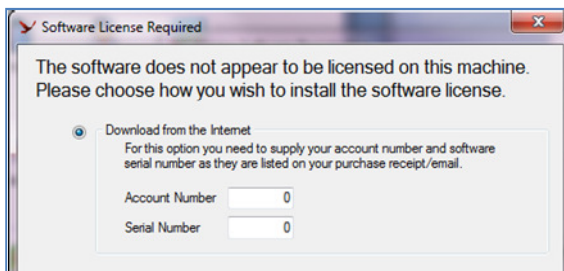
Install Alerion POS. Double-click **AlerionSetup(Web).exe**.

Follow the prompts for the Alerion POS Installation. When the install is finished, click **Finish**.

Launch Alerion POS by double-clicking the icon that was created on your desktop.



Enter your account number and Alerion POS Serial number into the appropriate boxes and click **OK**.

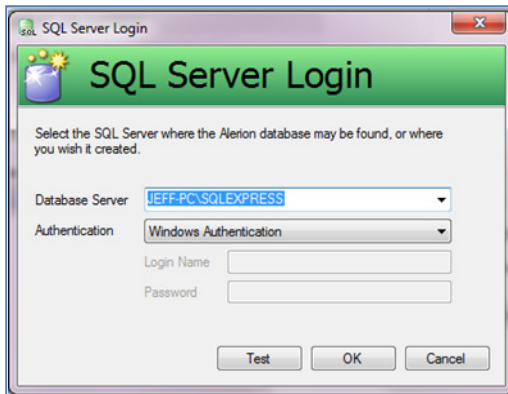


Your account number is: XXXX

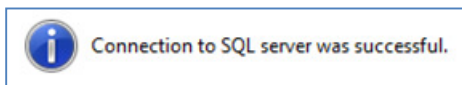
Your Alerion POS serial number is: YYYY

Connect to your Alerion database.

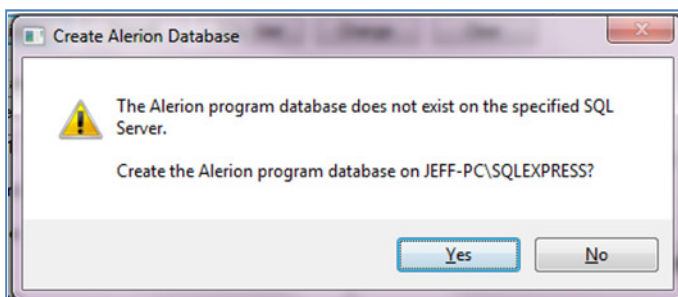
Alerion will ask you where your database is located.



Click **Test** with the default values. If the connection was successful you will see a success message. Click **OK** to save the database connection settings.



Alerion will tell you that the database does not exist on this computer. That is right. Click **Yes** to create it.

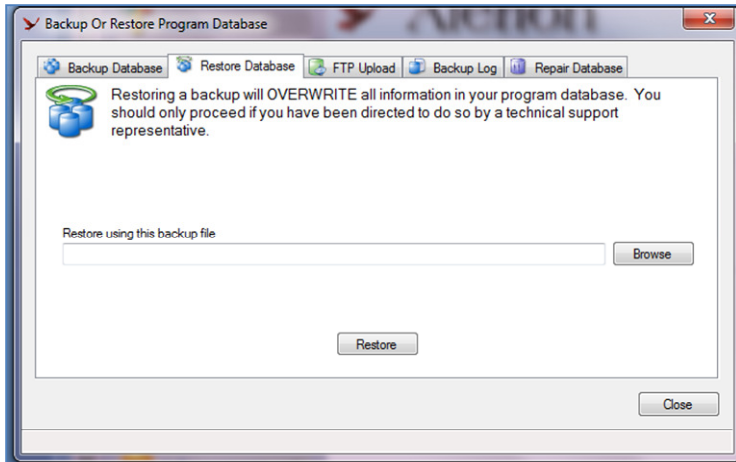


Alerion will tell you that the database has been initialized, click **OK**.

Login as Store Owner with no password.

Click **Backup Database** on the left hand side under the Functions heading.

Click the **Restore Database** tab on the top.



Insert the USB Stick you used to back up the Alerion database into this new computer (Server).

Click **Browse**.

Browse to the USB Stick and choose the Alerion backup file and click **Open**.

Back at the Backup or Restore window, click **Restore**.

A warning will indicate you are about to overwrite the database. Click **Yes**.

A warning box about antivirus programs will appear, click **OK**.

The restore is complete click **OK**.

Alerion XMT

Browse to your downloads folder on your computer.

Install Alerion POS. Double-click **AlerionXMTSetup.exe**.

Follow the prompts for the Alerion POS Installation. When the install is finished, click **Finish**.

Launch Alerion XMT by double-clicking the icon that was created on your desktop.



Enter your account number and Alerion XMT Serial number into the appropriate boxes and click **OK**.

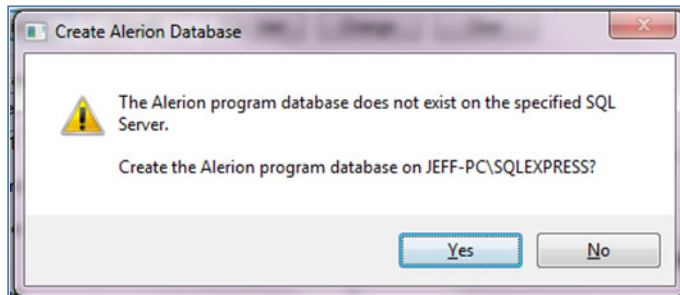
Your account number is: XXXX

Your Alerion XMT serial number is: YYYY

Restore the Alerion XMT Database On The New Server (Computer)

Launch Alerion XMT.

Alerion will tell you that the Alerion XMT database does not exist on this computer. That is right. Click **Yes** to create it.

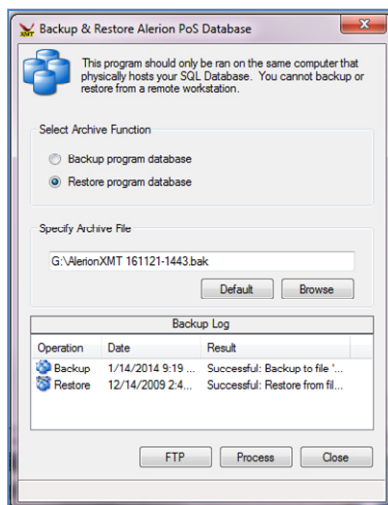


Alerion will tell you that the Alerion XMT database has been initialized, click **OK**.

Login as Store Owner with no password.

Click **Backup XMT Database** on the left hand side under the Functions heading.

Click the **Restore Program Database** tab on the top.



Insert the USB Stick you used to back up the Alerion database into this new computer (Server).

Click **Browse**.

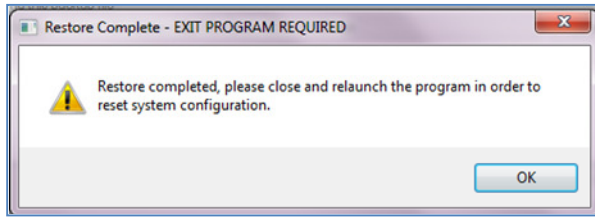
Browse to the USB Stick and choose the Alerion XMT backup file and click **Open**.

Back at the Backup or Restore window, click **Process**.

A warning will indicate you are about to overwrite the database. Click **Yes**.

A warning box about antivirus programs will appear, click **OK**.

The restore is complete click **OK**.



Close Alerion XMT completely. Then launch Alerion XMT.

You can reach our help line at (800) 922-4556 Opt 2. Monday through Friday 8:00am to 11:30am and 1:00pm to 4:00pm Pacific Time.

Phoenix Information Systems
160 Chemawa Road N
Keizer, OR 97303
(800) 922-4556
www.phx-is.com